



TOWN of Bethlehem *Economic Developments*

2008--05 / No. 2

"The Town will grow in a manner that maintains and enhances its preeminent residential and semi-rural character through the attraction of high quality, clean, commercial development to carefully planned and strategically located sites. Residential neighborhoods in the Town will be enhanced by proximity to open space, pedestrian oriented facilities, high quality employment opportunities and neighborhood scale commercial services."

BIDA Vision Statement

PLANNING FOR THE YEAR 2020

Town Supervisor Jack Cunningham launched the Bethlehem 20/20 Advisory Committee on February 15 with an overview of strategic planning by the Bethlehem IDA followed by a discussion of the Town's finances.

The Committee is composed of 27 residents and is Co-Chaired by former Town Supervisors Terri Egan and Ken Ringler. The tasks of the Committee are to:

- Assist the Town in making key organizational and investment decisions that can increase the potential for achieving the community's vision for the year 2020, as articulated in the Town's Comprehensive Plan;
- Provide guidance and assistance to the Town in developing recommendations related to municipal infrastructure, facility needs and essential and discretionary programs and services.

The committee will conduct financial analysis that will consider the desired balance between residential and non-residential tax revenue and an assessment of risk to the existing tax base, i.e., the potential for loss of a major taxpayer/employer. The financial analysis will also consider the impact of alternative growth scenarios on the Town's fiscal operations.

The Committee will also develop a community leadership program to engage other community organizations in the discussion. The ultimate goal will be to create a compact in which the entire community supports the principals, goals and objectives of the Committee.

The Committee will accomplish this ambitious agenda by meeting on the second Friday of each month over eighteen months through April 2009 at the Elsmere Fire Hall on Poplar Drive in Delmar at 7:30 a.m. On April 11, staff members of the Public Works, Engineering and Highway Departments will present an overview of the existing infrastructure. The public is welcome to attend.

[Click here to link to a map of the latest developments in Slingerlands](#)

A Bulletin provided by the Town of Bethlehem,
Bethlehem Chamber of Commerce and the
Bethlehem Industrial Development Agency

For more information contact:

edb@townofbethlehem.org / 518-439-4955, ext. 1159

 Send to a Colleague



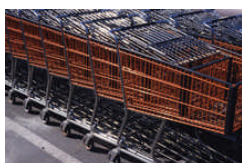
[Town of Bethlehem Planning Department resources](#)



[BIDA offers financial assistance for businesses](#)



[Local Waterfront Revitalization](#)



[9W Linkage Study](#)