



# TOWN of Bethlehem *Economic Developments*

2008--08 / No. 5

"The Town will grow in a manner that maintains and enhances its preeminent residential and semi-rural character through the attraction of high quality, clean, commercial development to carefully planned and strategically located sites. Residential neighborhoods in the Town will be enhanced by proximity to open space, pedestrian oriented facilities, high quality employment opportunities and neighborhood scale commercial services."

BIDA Vision Statement



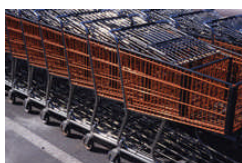
[Town of Bethlehem Planning Department resources](#)



[BIDA offers financial assistance for businesses](#)



[Local Waterfront Revitalization](#)



[9W Linkage Study](#)

## CSX RAIL YARD: ECONOMIC ENGINE

The CSX Corporation rail yard in the hamlet of Selkirk is one of the hidden jewels of Bethlehem's economy. The Selkirk Yard is the second largest in the CSX system and the hub of the Albany Division, which includes all of New York State, New England, New Jersey, western Pennsylvania and southern Quebec. The CSX system services the eastern third of the United States ranging from Florida to Mississippi to Illinois to Massachusetts.

The Yard services 80 trains a day on 79 tracks for 85 possible destinations. Each train may have 100 to 150 cars with one car holding as many as four trucks. The cars are classified Intermodal (truck trailers), Auto and Merchandise. At any one time there are 2,500 to 3,000 rail cars at the yard. The Yard's biggest customers are GM, Ford and UPS and the principal products are autos, ethanol, grain and garbage/demolition debris. There are about 1,120 employees in the Yard and about 1,800 employees in the Albany Division with salaries in the range of \$75,000 to \$100,000. Even before the spike in petroleum prices, business has been booming in the Yard, but with high gas prices more and more products are being moved by rail. By way of example, CSX recently began moving fruits and vegetables coast to coast, a shipment that was formerly made exclusively by truck.

Importantly for Bethlehem, SABIC, Owens Corning, World Logistics, Airco and Huttig are located around the periphery of the Yard. The planned improvements to connect Creble Road directly to the New York State Thruway will greatly enhance the appeal of the rail yards and encourage new business investment in this industrial district.

[Click here to link to a map of the latest developments in Slingerlands](#)

A Bulletin provided by the Town of Bethlehem, Bethlehem Chamber of Commerce and the Bethlehem Industrial Development Agency

For more information contact:  
[edb@townofbethlehem.org](mailto:edb@townofbethlehem.org) / 518-439-4955, ext. 1159

 Send to a Colleague