



TOWN of Bethlehem *Economic Developments*

2008--10 / No. 7

"The Town will grow in a manner that maintains and enhances its preeminent residential and semi-rural character through the attraction of high quality, clean, commercial development to carefully planned and strategically located sites. Residential neighborhoods in the Town will be enhanced by proximity to open space, pedestrian oriented facilities, high quality employment opportunities and neighborhood scale commercial services."

BIDA Vision Statement



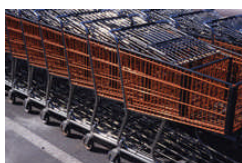
[Town of Bethlehem Planning Department resources](#)



[BIDA offers financial assistance for businesses](#)



[Local Waterfront Revitalization](#)



[9W Linkage Study](#)

MORE TOWN JEWELS: OWENS CORNING

The Owens Corning plant at the intersection of Route 32 and Creble Road is another jewel in Bethlehem's industrial treasury – a diamond in the necklace surrounding the CSX rail yard.

The plant, one of six in the United States manufacturing insulation for residential use, supplies the Northeastern part of the country. It has two massive production lines that are impressively automated – sand/silica in one end and insulation out the other end. The plant operates 24/7 362 days per year with 373 employees at full capacity. Salaries and benefits rank in the top 10% of salaries and benefits in the region. In 2007 the company invested \$6 million to upgrade the packaging and shipping portion of the facility and rebuild a furnace.

Since insulation for housing is dependent upon construction demand, it is obvious that in 2008 the market for insulation is difficult. The good news is that the Delmar plant - with advantages in the production process and the advantage of proximity to Northeastern markets - continues to supply New York, New Jersey and New England, while other plants have been shut down or the opening of a new plant deferred. To counter the cyclical housing market, the company plans to diversify into non-housing products such as fiberglass-reinforced bumpers, fishing rods and windmill blades.

Why is Owens Corning one of our Town's jewels? Because in 2007, it paid approximately \$137,000 in Town and County taxes and \$356,000 in school taxes AND provided 373 jobs. Bethlehem needs more jewels like Owens Corning on its assessment roll.

[Click here to link to a map of the latest developments in Slingerlands](#)

A Bulletin provided by the Town of Bethlehem, Bethlehem Chamber of Commerce and the Bethlehem Industrial Development Agency

For more information contact:
edb@townofbethlehem.org / 518-439-4955, ext. 1159

 [Send to a Colleague](#)