



TOWN of Bethlehem *Economic Developments*

2008--11 / No. 8

"The Town will grow in a manner that maintains and enhances its preeminent residential and semi-rural character through the attraction of high quality, clean, commercial development to carefully planned and strategically located sites. Residential neighborhoods in the Town will be enhanced by proximity to open space, pedestrian oriented facilities, high quality employment opportunities and neighborhood scale commercial services."

BIDA Vision Statement



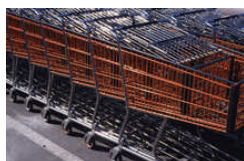
[Town of Bethlehem Planning Department resources](#)



[BIDA offers financial assistance for businesses](#)



[Local Waterfront Revitalization](#)



[9W Linkage Study](#)

SELKIRK YARDS FOCUS GROUP MEETING SET

Supervisor Jack Cunningham has scheduled a meeting of business, governmental and economic development leaders to discuss business retention and development opportunities in the Selkirk Yards Industrial District. The Town will be holding this round table conversation on Friday, December 12, 2008, from 7:45 – 9:15 a.m. at the Parks and Recreation offices located at 261 Elm Avenue, Delmar. The meeting will address, among other things, infrastructure, marketing, regional growth trends, inter-modal transportation, workforce and economic development programs and services.

Included among those invited to participate in the focus group will be area businesses including SABIC, Owens Corning, CSX, Logistics One, World Logistics, Security Supply, Verstandig's, Selkirk Ventures, Huttig and others. The businesses will be joined by several Town Departments, the Center for Economic Growth, the Albany County Executive's Office, National Grid, NYS Department of Transportation, Empire State Development Corporation and elected officials representing the Town.

[Click here to link to a map of the latest developments in Slingerlands](#)

A Bulletin provided by the Town of Bethlehem, Bethlehem Chamber of Commerce and the Bethlehem Industrial Development Agency

For more information contact:
edb@townofbethlehem.org / 518-439-4955, ext. 1159

 [Send to a Colleague](#)

© 2008 Bethlehem